

Monthly Weather Summary in Thailand June 2017

Under the influence of the active southwest monsoon over the Andaman Sea and Thailand during early month, the low pressure cell over the Bay of Bengal moving to cover India and Bangladesh during the first half of the month associated with the low pressure cell covering the Gulf of Tonkin and upper Vietnam during the second half of the month. These caused intermittent abundant rainfall in Thailand with thundershower and flash flooding in some areas. However, monthly rainfall was lower than normal in almost parts i.e. northern part 2.0 mm (1%), eastern part 38.4 mm (15%), southern part (east coast) 8.8 mm (8%) and southern part (west coast) 9.0 mm (3%) whereas northeastern and central parts was higher than normal 24.5 mm (12%) and 27.7 mm (19%), respectively

1 – 10 June : The active southwest monsoon prevailed over the Andaman Sea and Thailand nearly the whole period. In addition, the low pressure cell covering the middle Bay of Bengal during mid-period moving to cover the upper Bay of Bengal and the low pressure cell covering Laos and upper Vietnam during late period. This caused scattered to fairly widespread rain over upper Thailand almost the whole period with heavy to very heavy rainfall in some areas. The highest daily rainfall was 200.0 mm at Chum Tha Bong in Nakhon Sawan province on June 9. Thundershower occurred at Uthai Thani province on June 5 and Chiang Mai provinces on June 10. In southern part, scattered to fairly widespread rain was found during the first half of the period then decreasing in rainfall. The heaviest daily rainfall was 113.8 mm at Amphoe Mueang in Ranong province on June 5.

11 – 20 June : Affected by moderate southwest monsoon prevailing over the Andaman Sea and Thailand, the low pressure cell over the upper Bay of Bengal moving to cover India and Bangladesh during early period associated with the low pressure cell covering the Gulf of Tonkin and upper Vietnam during the middle and the end of the period. These conditions caused scattered to widespread rain over upper Thailand with heavy to very heavy rainfall in some areas nearly the whole period. The highest daily rainfall of 100.7 mm was recorded at Amphoe Hua Taphan in Amnat Charoen province on June 14. Flash floods occurred at Khon Kaen and Lop Buri provinces on June 14 and at Nan province on June 15. In southern part, isolated rain was reported along the east coast with heavy rainfall in some areas except for scattered rain with heavy rainfall in some areas during June 13 - 15 while scattered to widespread rain was found along the west coast with isolated heavy rainfall except for isolated rain with heavy rainfall on June 11 and June 17. The highest daily rainfall amount was 90.0 mm at Amphoe Mueang in Trang province on June 16.

21 – 30 June : Due to the moderate to rather active southwest monsoon prevailing across the Andaman Sea and Thailand and the low pressure cell covering upper Vietnam throughout the period, rainfall relatively increased over upper Thailand with scattered to fairly widespread rain and heavy to very heavy rainfall in some areas. The maximum daily rainfall recorded in this period was 126.8 mm at Khlong Yai in Trat province on June 24. Southern Thailand obtained abundant rain especially along the west coast that received fairly widespread to widespread rain nearly the whole period with isolated heavy to very heavy rainfall in some areas. The highest daily rainfall was 120.8 mm at Amphoe Mueang in Ranong province on June 22.

Note : Rainfall, temperatures and natural disasters available in this report are preliminary data.

Climatological Center
Meteorological Development Bureau
Meteorological Department

Monthly Current Report
Rainfall and Accumulative Rainfall
June 2017

Northern Thailand

Station	Temperature (°c)		Rainfall (mm)		Accumulative rainfall (mm) Since 1 January	
	Mean	Above or below normal	Actual	Above or below normal	Actual	Above or below normal
Chiang Rai	27.8	0.6	294.4	116.0	796.0	256.8
Mae Hong Son	28.3	0.7	128.0	-62.5	294.1	-163.3
Phayao	28.0	0.4	85.9	-16.9	497.2	80.4
Chiang Mai	28.2	0.6	234.5	110.0	726.4	351.7
Tha Wang Pha	27.9	0.7	148.1	36.1	947.6	170.8
Nan	29.2	0.9	56.8	-77.0	352.1	-107.6
Lamphun	28.6	0.4	148.1	23.9	630.7	286.4
Lampang	28.8	0.5	107.7	-9.8	669.6	291.4
Mae Sariang	27.1	0.3	199.8	16.8	404.1	-8.1
Phrae	28.6	0.4	126.8	-12.0	535.5	94.3
Uttaradit	29.3	0.4	128.2	-78.2	615.3	64.5
Bhumibol Dam	28.9	0.4	87.1	-19.4	545.9	145.1
Tak	29.0	0.6	91.9	-35.9	462.8	79.6
Mae Sot	27.1	0.8	196.5	-58.9	359.5	-140.3
Umphang	25.5	0.5	164.9	-22.6	523.0	-24.6
Phitsanulok	29.1	0.1	214.5	48.8	616.4	180.0
Lom Sak	28.4	0.2	151.1	14.9	479.8	63.9
Phetchabun	28.9	0.7	168.1	6.4	658.9	188.8
Wichian Buri	29.3	0.2	217.3	73.0	503.4	40.2
Kamphaeng Phet	28.8	0.4	133.3	-31.8	901.9	436.4
Over the area	28.3	0.4	154.2	-2.0 -1%	576.0	127.6 28%

Northeastern Thailand

Station	Temperature (°c)		Rainfall (mm)		Accumulative rainfall (mm) Since 1 January	
	Mean	Above or below normal	Actual	Above or below normal	Actual	Above or below normal
Nong Khai	28.8	0.6	263.1	0.8	706.3	70.3
Loei	28.1	0.3	180.0	20.4	731.2	208.0
Udon Thani	28.7	0.1	275.3	46.3	716.2	136.6
Nakhon Phanom	28.3	0.5	226.8	-182.7	881.5	19.7
Sakon Nakhon	28.4	0.3	455.8	189.0	1055.4	376.2
Mukdahan	28.5	0.2	375.3	141.9	799.1	229.9
Khon Kaen	28.6	0.0	267.0	105.4	542.2	54.8
Kosum Phisai	29.3	0.3	134.0	-43.8	639.0	140.4
Roi Et	29.1	0.4	178.0	-45.5	586.7	37.2
Chaiyaphum	28.8	0.3	186.4	48.8	556.8	116.3
Ubon Ratchathani	29.0	0.6	258.6	18.4	775.2	191.7
Tha Tum	29.4	0.3	110.3	-95.8	455.0	-75.5
Surin	28.8	0.5	151.4	-53.3	613.5	73.0
Nakhon Ratchasima	29.1	0.0	287.2	182.7	839.8	447.6
Chok Chai	28.9	0.2	198.5	91.2	603.3	209.4
Nang Rong	28.6	0.0	98.9	-30.8	492.9	42.8
Over the area	28.8	0.3	227.9	24.5 12%	687.1	142.3 26%

- NOTES :
- 1) Mean temperature is the average of daily dry-bulb temperature
 - 2) "T" is trace, rainfall amount less than 0.1 mm.
 - 3) "blank" is incomplete data.
 - 4) Temperature and rainfall are preliminary data.

Monthly Current Report
Rainfall and Accumulative Rainfall
June 2017

Central Thailand

Station	Temperature (°c)		Rainfall (mm)		Accumulative rainfall (mm) Since 1 January	
	Mean	Above or below normal	Actual	Above or below normal	Actual	Above or below normal
Nakhon Sawan	29.3	-0.1	263.2	125.9	751.5	350.5
Bua Chum	29.1	0.2	136.3	20.0	420.9	25.4
Lop Buri	29.4	0.4	164.9	40.9	557.9	160.6
Suphan Buri	30.1	0.9	42.4	-52.0	427.1	139.8
Thong Pha Phum	27.8	0.7	164.0	-114.3	520.2	-155.6
Kanchanaburi	30.2	1.2	85.0	-1.4	491.3	130.6
Bangkok Airport	29.6	0.2	298.7	130.6	909.4	384.4
Bangkok Metropolis	29.8	0.3	228.8	71.7	875.4	303.8
Over the area	29.4	0.5	172.9	27.7 19%	619.2	167.4 37%

Eastern Thailand

Station	Temperature (°c)		Rainfall (mm)		Accumulative rainfall (mm) Since 1 January	
	Mean	Above or below normal	Actual	Above or below normal	Actual	Above or below normal
Prachin Buri	29.5	0.6	251.9	28.4	633.7	-12.2
Kabin Buri	28.3	-0.1	233.2	35.3	749.1	174.7
Aranyaprathet	29.2	0.6	109.5	-54.1	785.6	282.6
Chon Buri	30.3	0.7	144.7	-3.0	646.8	178.0
Ko Sichang	29.6	0.3	45.4	-80.0	416.6	3.3
Pattaya	29.8	0.9	10.6	-108.4	398.0	-16.5
Sattahip	29.5	0.1	46.3	-83.8	732.9	248.2
Rayong	29.7	0.3	100.5	-64.6	845.0	272.2
Chanthaburi	28.3	0.4	564.7	52.1	1615.4	458.1
Khlong Yai	27.4	0.0	723.7	-106.2	1692.7	12.2
Over the area	29.2	0.4	223.1	-38.4 -15%	851.6	160.0 23%

- NOTES :
- 1) Mean temperature is the average of daily dry-bulb temperature
 - 2) "T" is trace, rainfall amount less than 0.1 mm.
 - 3) "blank" is incomplete data.
 - 4) Temperature and rainfall are preliminary data.

Monthly Current Report
Rainfall and Accumulative Rainfall
June 2017

Southern Thailand, east coast

Station	Temperature (°c)		Rainfall (mm)		Accumulative rainfall (mm) Since 1 January	
	Mean	Above or below normal	Actual	Above or below normal	Actual	Above or below normal
Phetchaburi	30.0	1.0	39.3	-52.7	532.3	255.5
Hua Hin	29.6	0.6	54.0	-24.9	601.3	286.1
Prachuap Khiri Khan	28.9	0.5	58.9	-27.3	940.6	554.0
Chumphon	28.2	0.6	124.7	-42.5	1258.8	613.7
Surat Thani	27.8	0.2	163.4	38.4	729.3	279.8
Ko Samui	28.7	0.0	93.9	-30.2	1401.5	817.0
Nakhon Si Thammarat	28.6	0.4	129.6	12.3	2343.9	1642.5
Songkhla	28.7	0.1	121.3	21.4	1219.8	742.1
Hat Yai Airport	27.8	0.1	90.6	-28.7	1116.0	577.1
Pattani Airport	28.1	0.2	135.4	26.0	1210.9	757.1
Narathiwat	27.9	0.0	135.0	11.8	2035.2	1424.4
Over the area	28.6	0.4	104.2	-8.8 -8%	1217.2	722.5 146%

Southern Thailand, west coast

Station	Temperature (°c)		Rainfall (mm)		Accumulative rainfall (mm) Since 1 January	
	Mean	Above or below normal	Actual	Above or below normal	Actual	Above or below normal
Ranong	27.5	0.2	661.9	12.5	1813.4	423.6
Takua Pa	27.7	-0.1	325.0	-99.2	1869.6	602.8
Phuket	28.6	0.0	243.7	30.4	1083.1	339.7
Phuket Airport	28.8	0.5	217.0	-39.8	1188.8	332.8
Ko Lanta	28.9	0.4	257.1	-1.4	1157.9	440.2
Trang Airport	27.8	0.4	283.8	82.7	1410.4	715.4
Satun	28.1	0.3	135.1	-48.4	1089.0	277.2
Over the area	28.2	0.2	303.4	-9.0 -3%	1373.2	447.4 48%

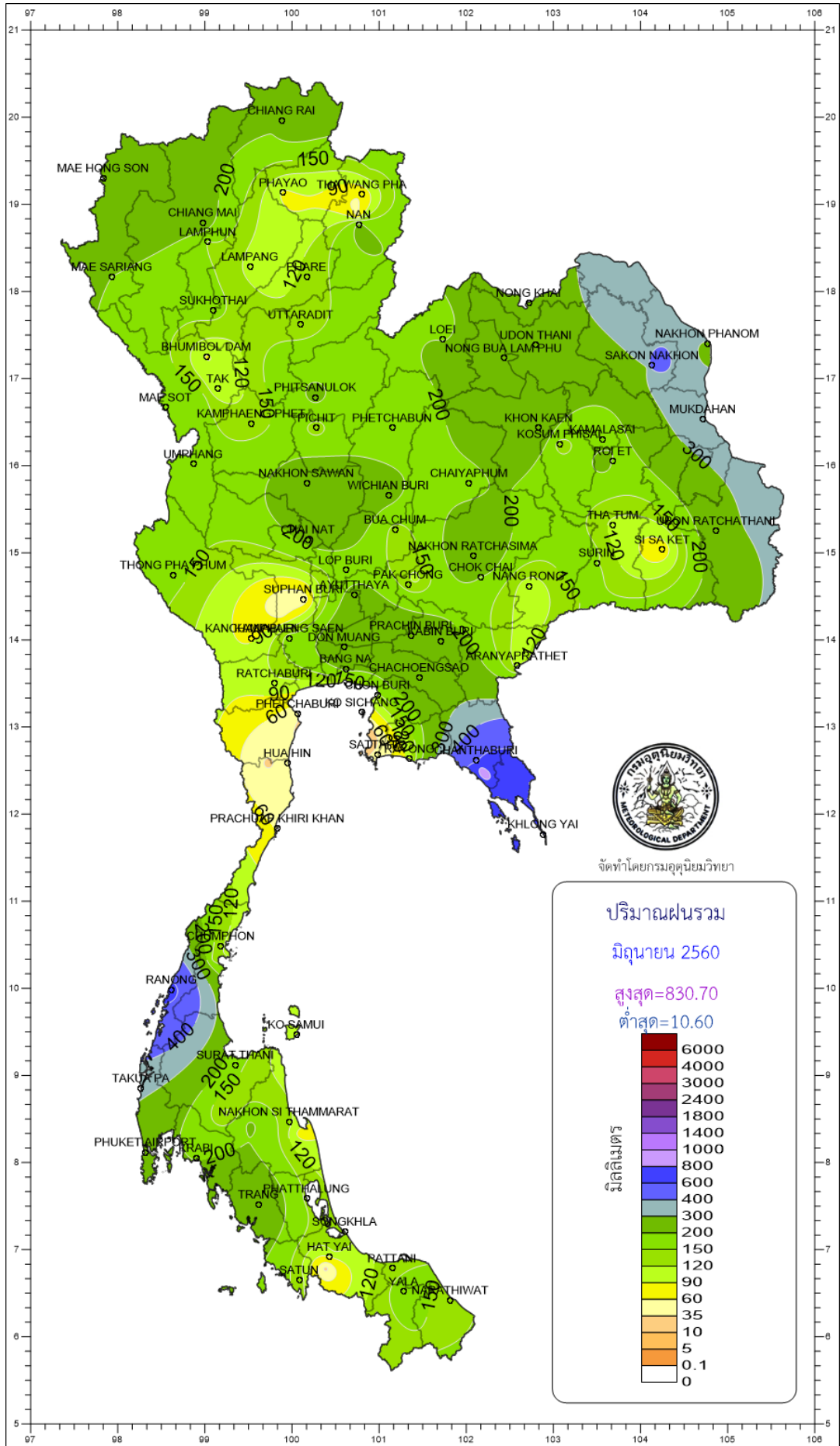
- NOTES :
- 1) Mean temperature is the average of daily dry-bulb temperature
 - 2) "T" is trace, rainfall amount less than 0.1 mm.
 - 3) "blank" is incomplete data.
 - 4) Temperature and rainfall are preliminary data.

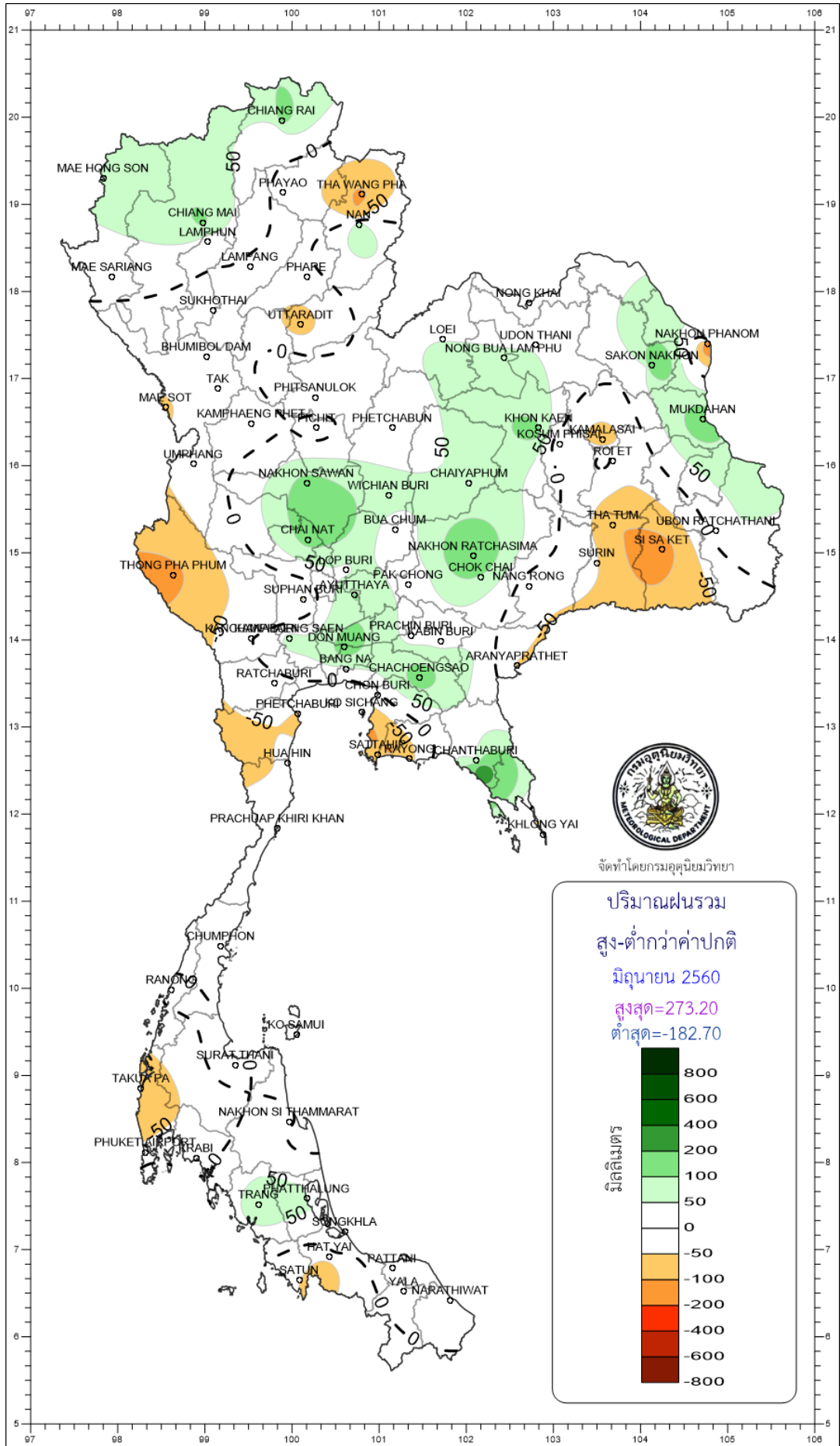
Monthly Current Report

June 2017

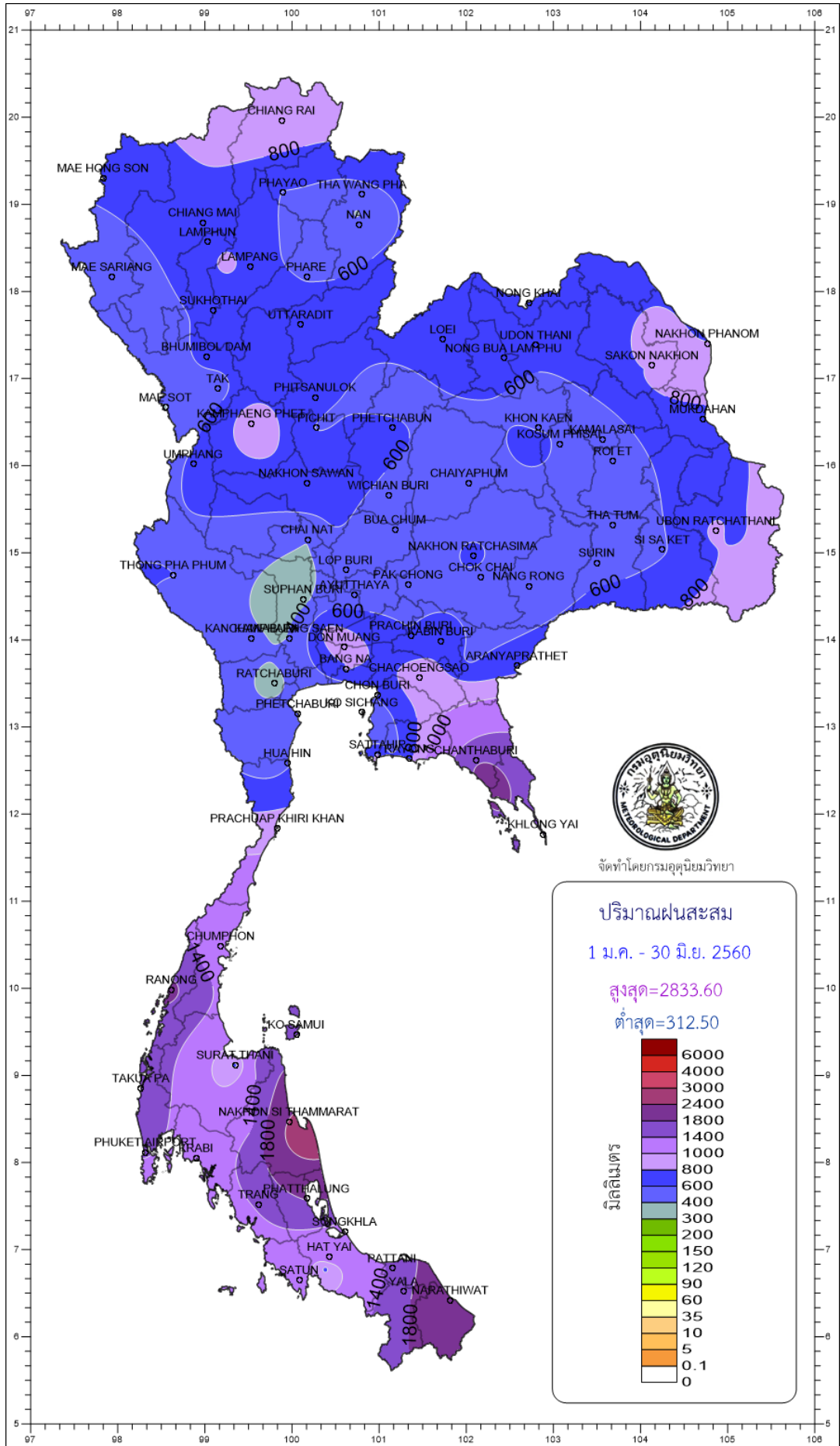
Region	Station	Temperature (°c)		Rainfall (mm)		Accumulative rainfall (mm) Since 1 January	
		Mean	Above or below normal	Actual	Above or below normal	Actual	Above or below normal
North	Chiang Rai	27.8	0.6	294.4	116.0	796.0	256.8
	Mae Hong Son	28.3	0.7	128.0	-62.5	294.1	-163.3
	Phayao	28.0	0.4	85.9	-16.9	497.2	80.4
	Chiang Mai	28.2	0.6	234.5	110.0	726.4	351.7
	Tha Wang Pha	29.0	1.1	148.1	-25.3	455.8	-52.6
	Nan	29.2	0.9	56.8	-77.0	352.1	-107.6
	Lamphun	28.6	0.4	148.1	23.9	630.7	286.4
	Lampang	28.8	0.5	107.7	-9.8	669.6	291.4
	Mae Sariang	27.1	0.3	199.8	16.8	404.1	-8.1
	Phrae	28.6	0.4	126.8	-12.0	535.5	94.3
	Uttaradit	29.3	0.4	128.2	-78.2	615.3	64.5
	Bhumibol Dam	28.9	0.4	87.1	-19.4	545.9	145.1
	Tak	29.0	0.6	91.9	-35.9	462.8	79.6
	Mae Sot	27.1	0.8	196.5	-58.9	359.5	-140.3
	Umphang	25.5	0.5	164.9	-22.6	523.0	-24.6
	Phitsanulok	29.1	0.1	214.5	48.8	616.4	180.0
	Lom Sak	28.4	0.2	151.1	14.9	479.8	63.9
	Phetchabun	28.9	0.7	168.1	6.4	658.9	188.8
	Wichian Buri	29.3	0.2	217.3	73.0	503.4	40.2
	Kamphaeng Phet	28.8	0.4	133.3	-31.8	901.9	436.4
Northeast	Nong Khai	28.8	0.6	263.1	0.8	706.3	70.3
	Loei	28.1	0.3	180.0	20.4	731.2	208.0
	Udon Thani	28.7	0.1	275.3	46.3	716.2	136.6
	Nakhon Phanom	28.3	0.5	226.8	-182.7	881.5	19.7
	Sakon Nakhon	28.4	0.3	455.8	189.0	1055.4	376.2
	Mukdahan	28.5	0.2	375.3	141.9	799.1	229.9
	Khon Kaen	28.6	0.0	267.0	105.4	542.2	54.8
	Kosum Phisai	29.3	0.3	134.0	-43.8	639.0	140.4
	Roi Et	29.1	0.4	178.0	-45.5	586.7	37.2
	Chaiyaphum	28.8	0.3	186.4	48.8	556.8	116.3
	Ubon Ratchathani	29.0	0.6	258.6	18.4	775.2	191.7
	Tha Tum	29.4	0.3	110.3	-95.8	455.0	-75.5
	Surin	28.8	0.5	151.4	-53.3	613.5	73.0
	Nakhon Ratchasima	29.1	0.0	287.2	182.7	839.8	447.6
Chok Chai	28.9	0.2	198.5	91.2	603.3	209.4	
Nang Rong	28.6	0.0	98.9	-30.8	492.9	42.8	
Central	Nakhon Sawan	29.3	-0.1	263.2	125.9	751.5	350.5
	Bua Chum	29.1	0.2	136.3	20.0	420.9	25.4
	Lop Buri	29.4	0.4	164.9	40.9	557.9	160.6
	Suphan Buri	30.1	0.9	42.4	-52.0	427.1	139.8
	Thong Pha Phum	27.8	0.7	164.0	-114.3	520.2	-155.6
	Kanchanaburi	30.2	1.2	85.0	-1.4	491.3	130.6
	Bangkok Airport	29.6	0.2	298.7	130.6	909.4	384.4
	Bangkok Metropolis	29.8	0.3	228.8	71.7	875.4	303.8
East	Prachin Buri	29.5	0.6	251.9	28.4	633.7	-12.2
	Kabin Buri	28.3	-0.1	233.2	35.3	749.1	174.7
	Aranyaprathet	29.2	0.6	109.5	-54.1	785.6	282.6
	Chon Buri	30.3	0.7	144.7	-3.0	646.8	178.0
	Ko Sichang	29.6	0.3	45.4	-80.0	416.6	3.3
	Pattaya	29.8	0.9	10.6	-108.4	398.0	-16.5
	Sattahip	29.5	0.1	46.3	-83.8	732.9	248.2
	Rayong	29.7	0.3	100.5	-64.6	845.0	272.2
	Chanthaburi	28.3	0.4	564.7	52.1	1615.4	458.1
Khlung Yai	27.4	0.0	723.7	-106.2	1692.7	12.2	
South (East Coast)	Phetchaburi	30.0	1.0	39.3	-52.7	532.3	255.5
	Hua Hin	29.6	0.6	54.0	-24.9	601.3	286.1
	Prachuap Khiri Khan	28.9	0.5	58.9	-27.3	940.6	554.0
	Chumphon	28.2	0.6	124.7	-42.5	1258.8	613.7
	Surat Thani	27.8	0.2	163.4	38.4	729.3	279.8
	Ko Samui	28.7	0.0	93.9	-30.2	1401.5	817.0
	Nakhon Si Thammarat	28.6	0.4	129.6	12.3	2343.9	1642.5
	Songkhla	28.7	0.1	121.3	21.4	1219.8	742.1
	Hat Yai Airport	27.8	0.1	90.6	-28.7	1116.0	577.1
	Pattani Airport	28.1	0.2	135.4	26.0	1210.9	757.1
Narathiwat	27.9	0.0	135.0	11.8	2035.2	1424.4	
South (West Coast)	Ranong	27.5	0.2	661.9	12.5	1813.4	423.6
	Takua Pa	27.7	-0.1	325.0	-99.2	1869.6	602.8
	Phuket	28.6	0.0	243.7	30.4	1083.1	339.7
	Phuket Airport	28.8	0.5	217.0	-39.8	1188.8	332.8
	Ko Lanta	28.9	0.4	257.1	-1.4	1157.9	440.2
	Trang Airport	27.8	0.4	283.8	82.7	1410.4	715.4
	Satun	28.1	0.3	135.1	-48.4	1089.0	277.2
	Over the area	28.7	0.4	189.1	0.4	812.4	254.9
					0%		46%

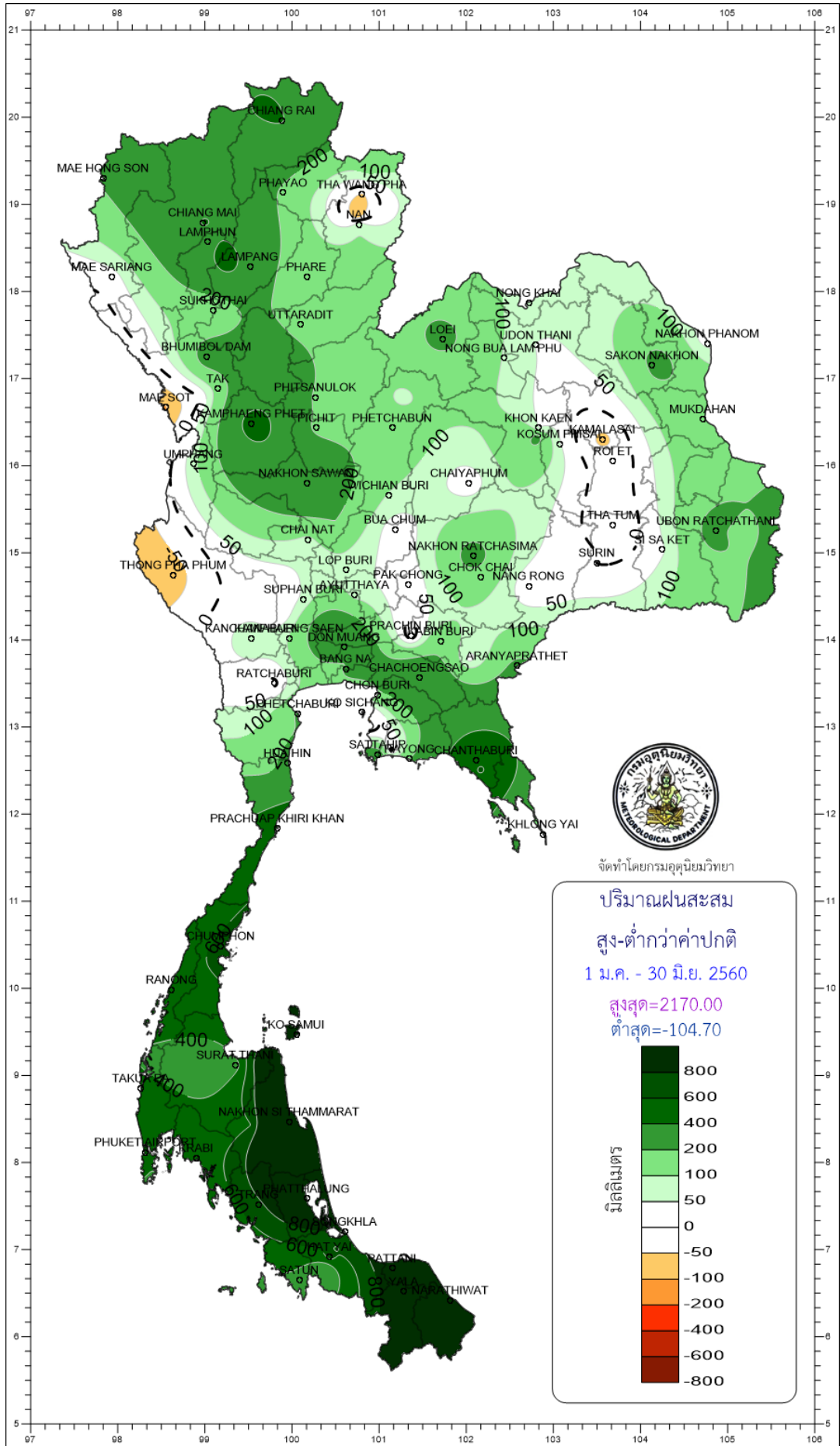
- NOTES :
- 1) Mean temperature is the average of daily dry-bulb temperature
 - 2) "T" is trace, rainfall amount less than 0.1 mm.
 - 3) "blank" is incomplete data.
 - 4) Temperature and rainfall are preliminary data.



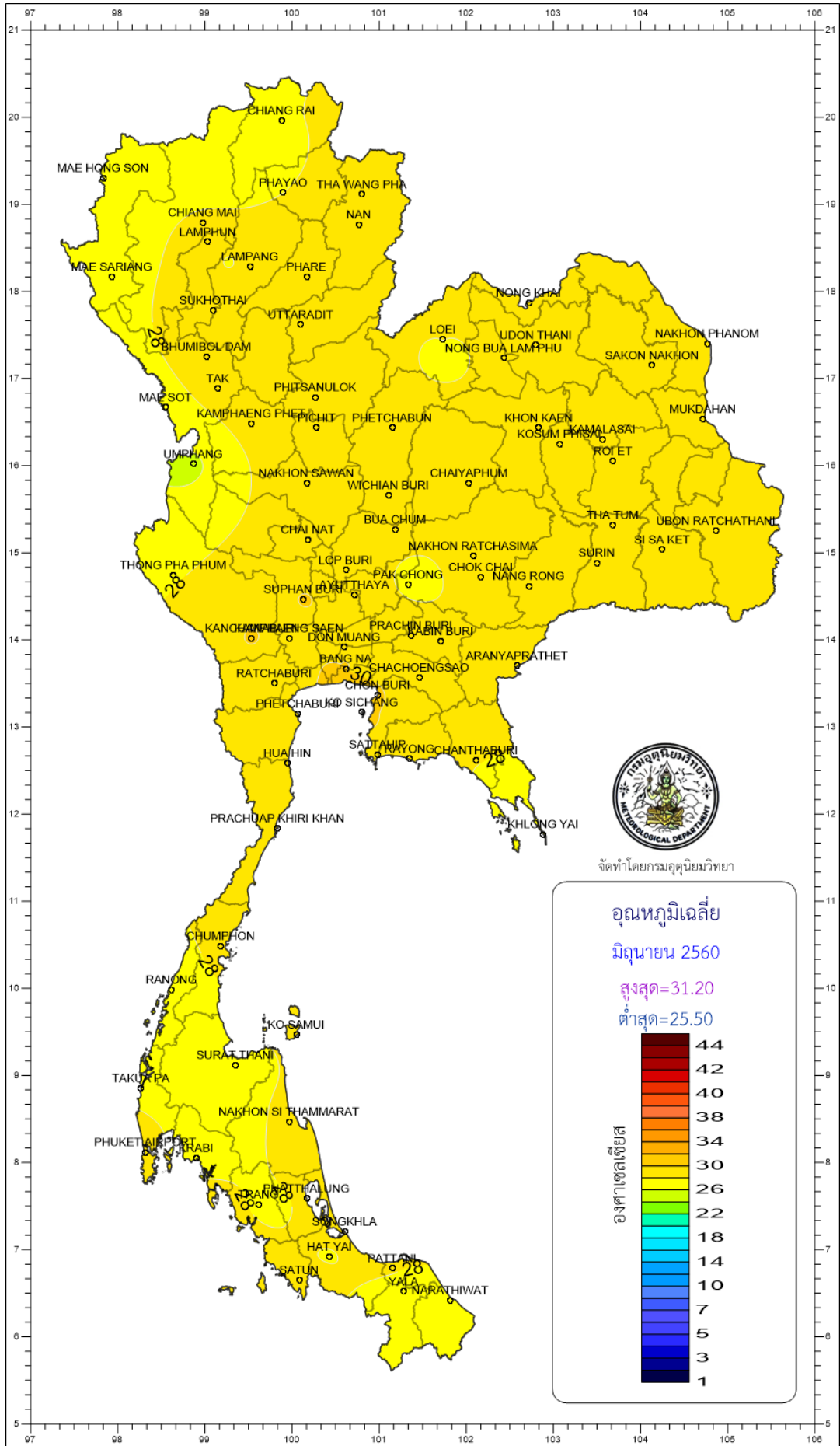


จัดทำโดยกรมอุตุนิยมวิทยา

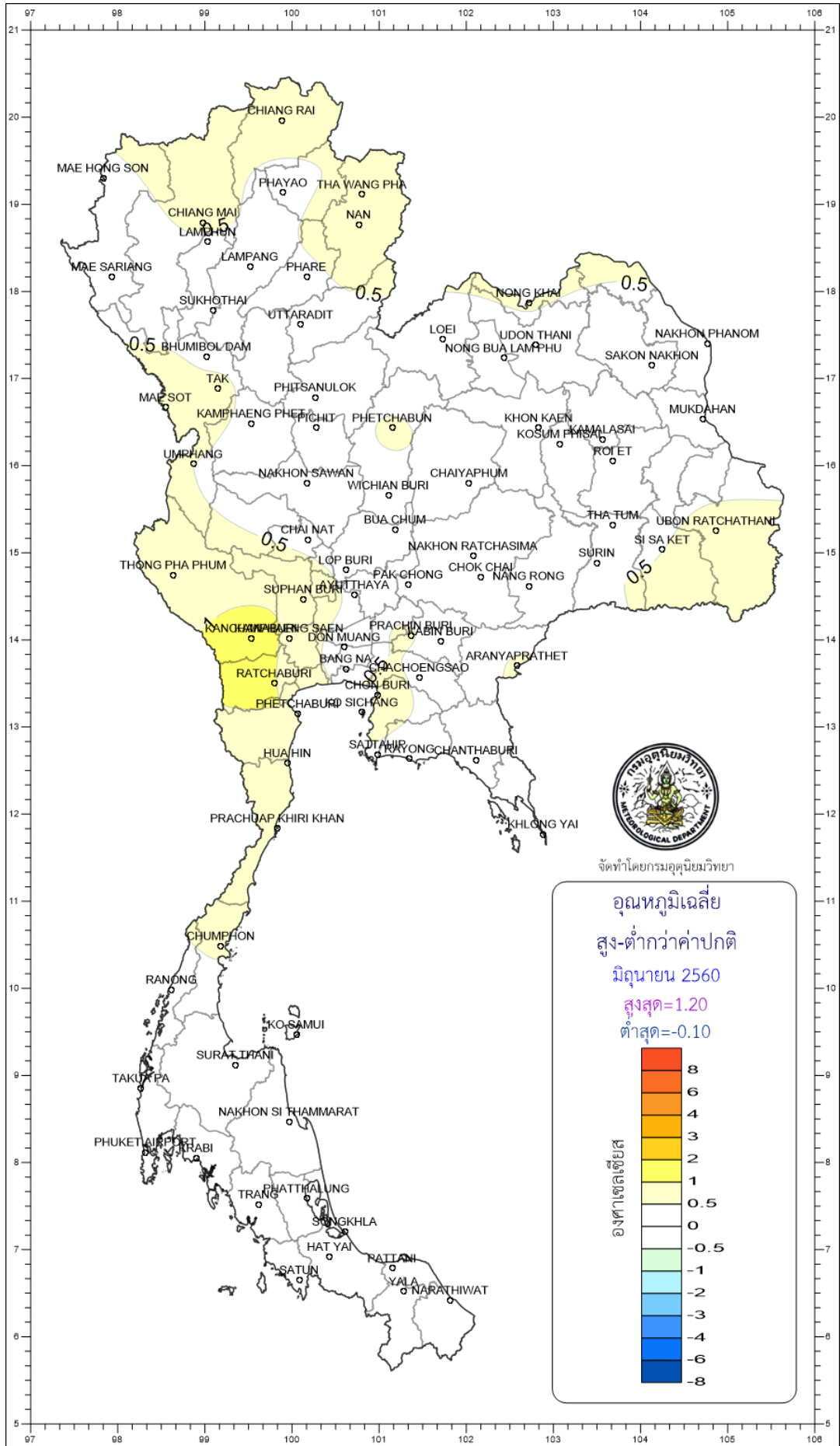


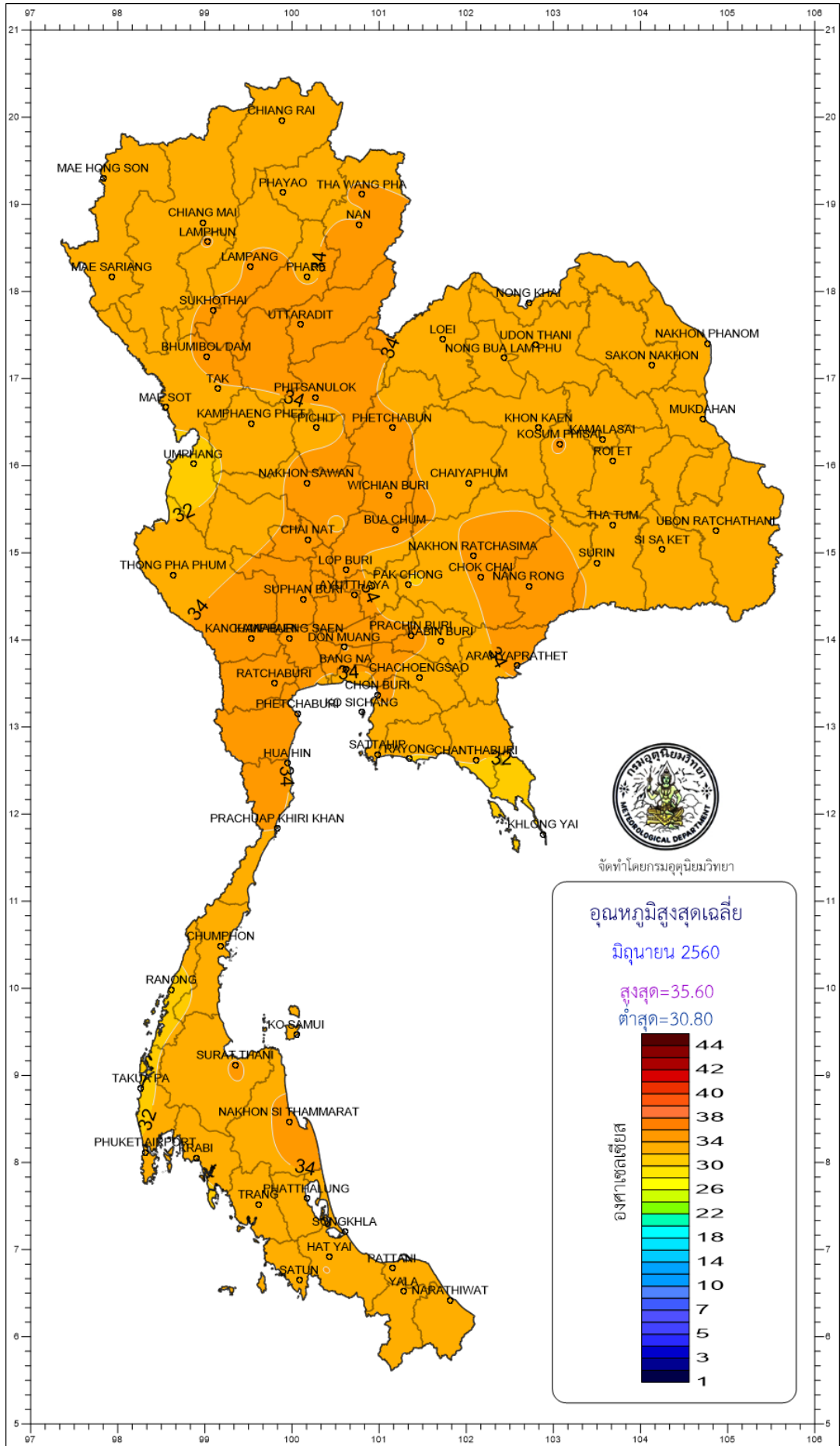


จัดทำโดยกรมอุตุนิยมวิทยา



จัดทำโดยกรมอุตุนิยมวิทยา





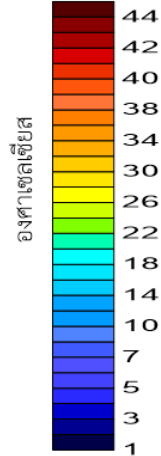
จัดทำโดยกรมอุตุนิยมวิทยา

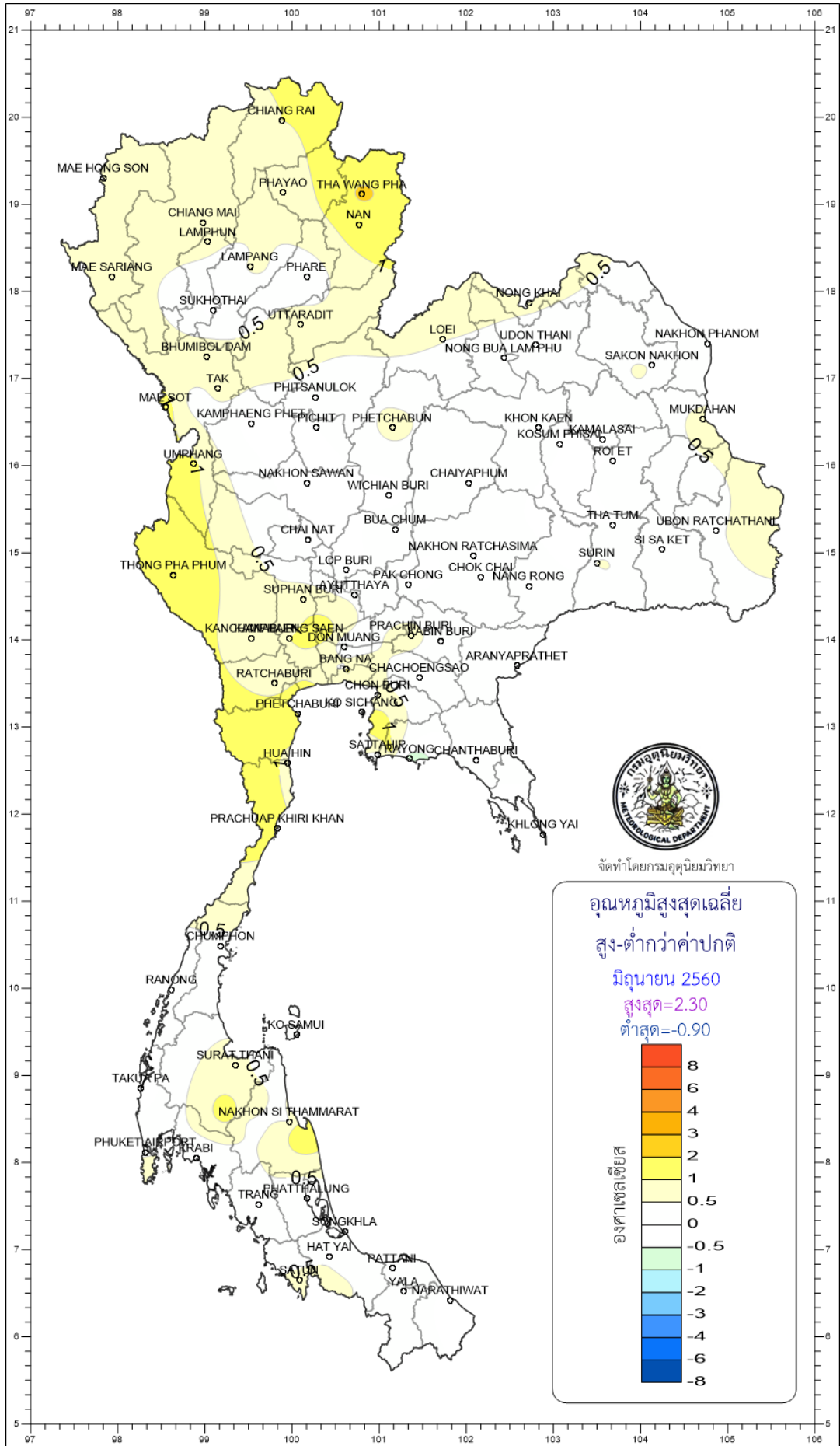
อุณหภูมิสูงสุดเฉลี่ย

มิถุนายน 2560

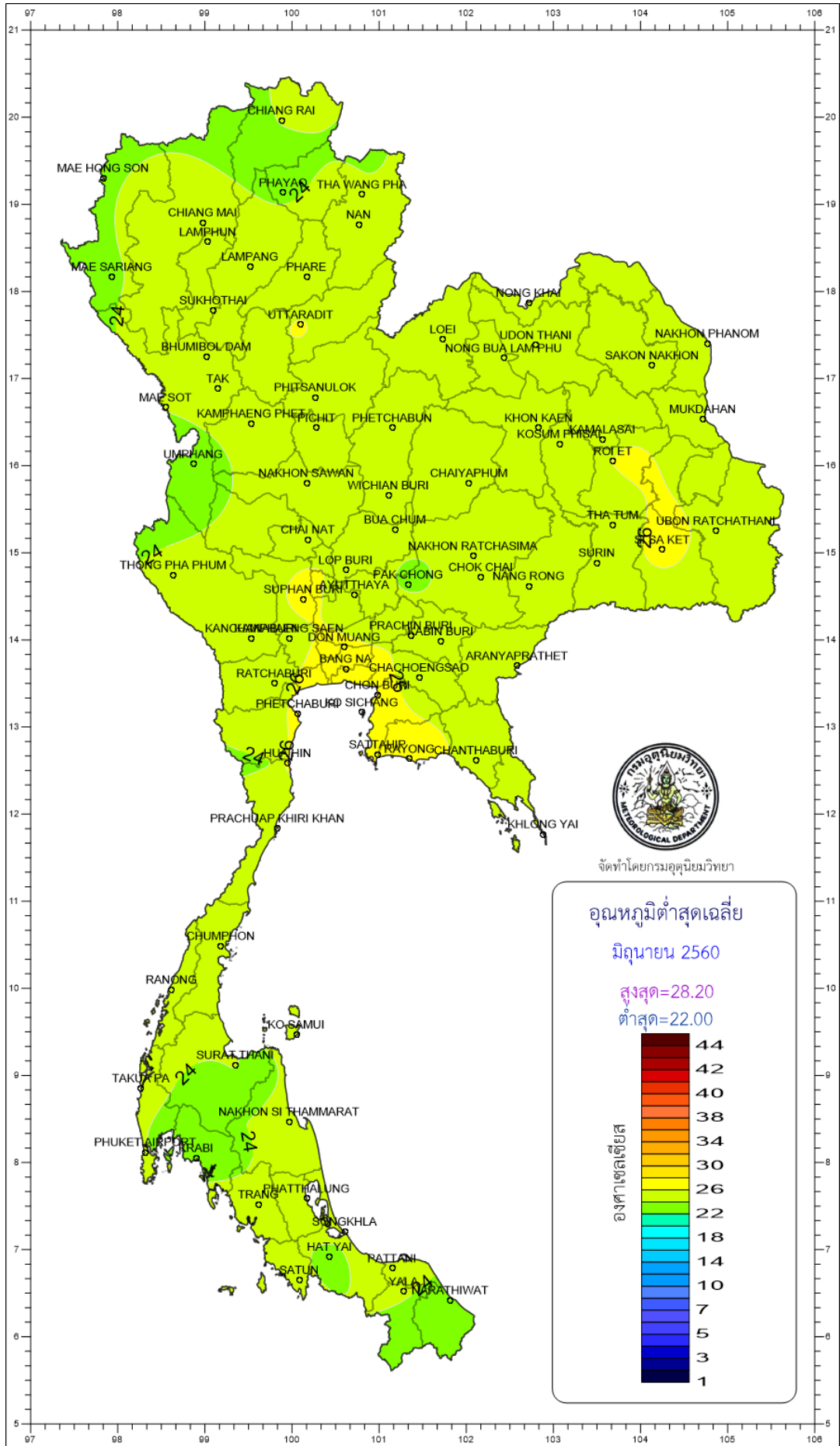
สูงสุด=35.60

ต่ำสุด=30.80

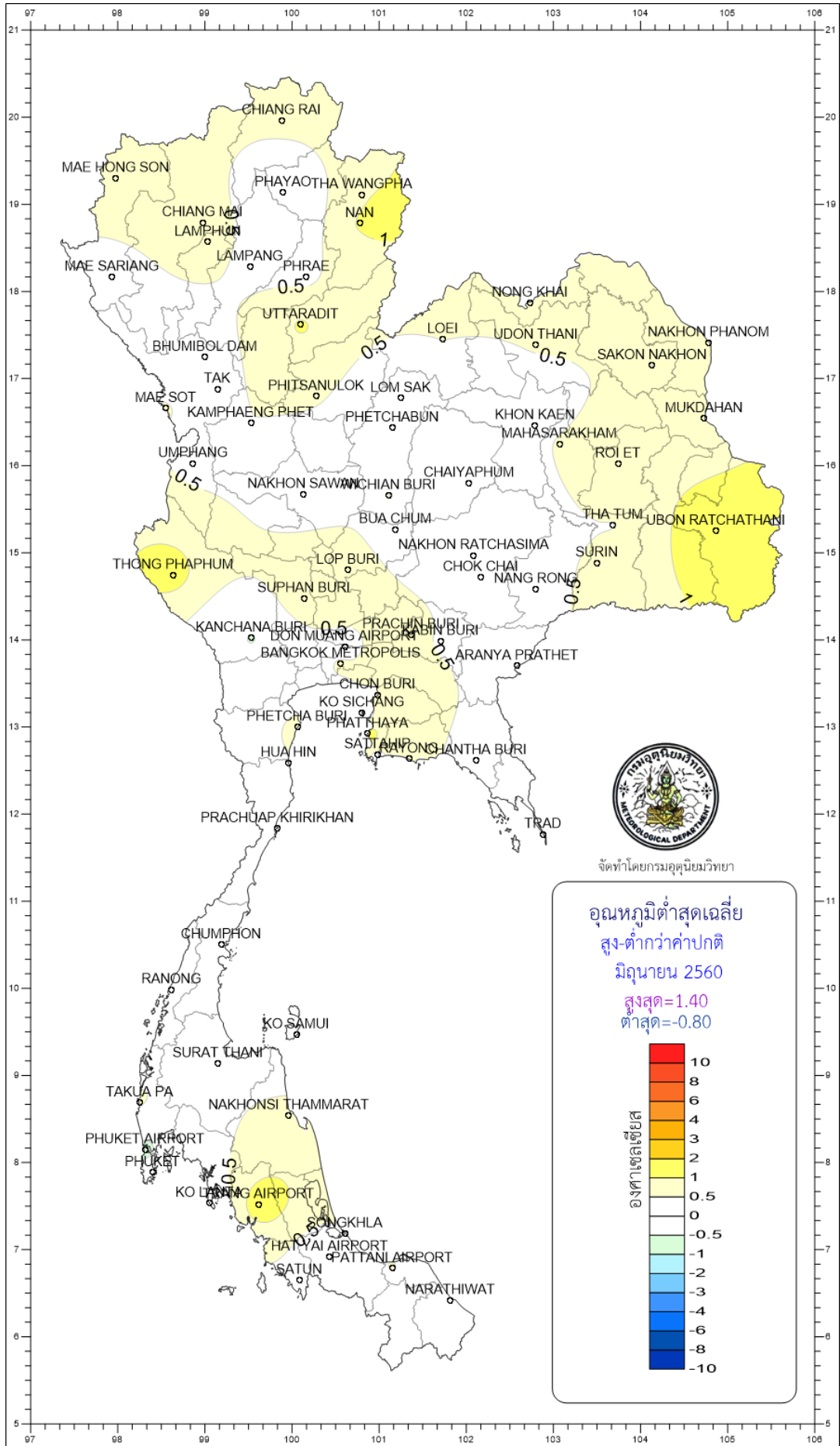




จัดทำโดยกรมอุตุนิยมวิทยา



จัดทำโดยกรมอุตุนิยมวิทยา



จัดทำโดยกรมอุตุนิยมวิทยา